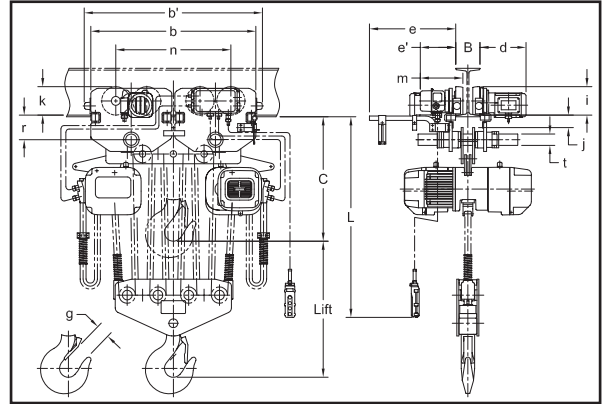
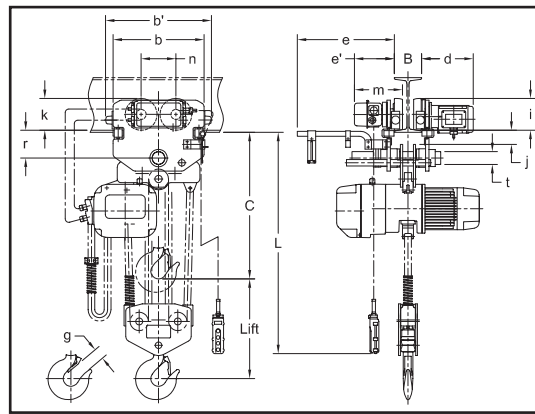


## Electric Chain Hoists | 10 Ton | ERM | Motorized Trolley | Single Speed

**Model ERM100L-L**

**ERM100L-L**

**ERM200S-L**


### Single Speed Hoist with Single Speed Trolley - Specifications

Capacity (Tons)	Model	Style	Lifting Speed (ft./min.)	Traversing Speed (ft./min.)	Headroom	Lifting Motor 3 Phase 60 Hz			Traversing Motor 3 Phase 60 Hz			Flange Range		Min. Radius	Load Chain Dia. (mm)	Weight (lbs.)	Weight for Additional One Foot of Lift (lbs.)	Strands of Load Chain
						Output (Hp)	Rated Current (amps)		Output (Hp)	Rated Current (amps)		Standard	Optional					
							@208-230V	@460V		@208-230V	@460V							
10	ERM100L-L	ER1	6	40	45.7"	4.7	18.3	9.2	1.0	5.1	2.5	5.50" – 8.66"	8.67" – 12.00"	98.4"	11.2 x 34.40	627	8.1	4
10	ERM100L-L	ER2	5.5		46.5	4.7	16.4	7.9	1.0	5.1	2.5	5.50" – 8.66"	8.67" – 12.00"	98.4"	11.2 x 31.20	759	7.4	4

Green shading reflects rental inventory.

### Single Speed Hoist with Single Speed Trolley - Dimensions (inches)

Capacity (Tons)	Model	Style	b	b1	B		C	d	e	e1	g	i	j	k	m	n	r	t
					Standard	Optional												
10	ERM100L-L	ER1	19.7"	22.9"	5.50" – 8.66"	8.67" – 12.00"	45.7"	11.2"	20.9"	8.8"	2.4"	6.89"	3.1"	6.9"	10.6"	7.5"	6.0"	2.76"
10	ERM100L-L	ER2	19.7"	22.9"	5.50" – 8.66"	8.67" – 12.00"	46.5"	11.2"	20.9"	8.8"	3.2"	6.89"	3.1"	6.9"	10.5"	7.5"	6.0"	2.76"

Green shading reflects rental inventory.