

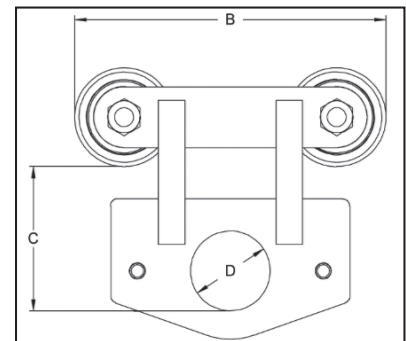
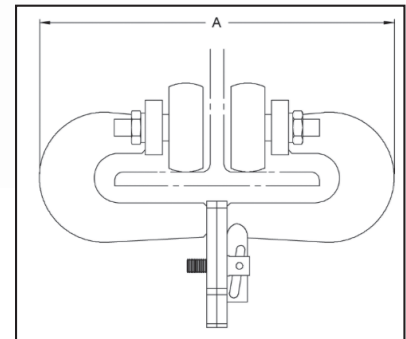
Beam Trolleys | 1 – 6 Ton | Riggers | Push Trolley



Riggers

Technical Information – Suitable for Beam Flange							
Model	Capacity (tons)	Weight (lbs.)	Width Min-Max	A	B	C	D
R1T	1	18	3" – 8"	13 7/16"	8"	3 1/2"	1 1/2"
R3T	3	30	3" – 8"	13"	10 1/2"	4 5/8"	2 1/2"
R6T	6	55	4" – 10"	17 7/16"	12"	6"	3 1/2"

Green shading reflects rental inventory.



Saflok

Technical Information – Suitable for Beam Flange							
Model	WLL (tons)	Weight (lbs.)	Width Min-Max	A	B	C	D
T20	1	13	3 – 6	10.64	7.99	3.86	1.50
T20W	1	14	4 – 8	13.51	7.99	3.86	1.50
T60	3	26	3 – 6	11.27	10.24	4.77	2.63
T60W	3	32	4 – 8	13.00	10.24	4.77	2.63

Green shading reflects rental inventory.