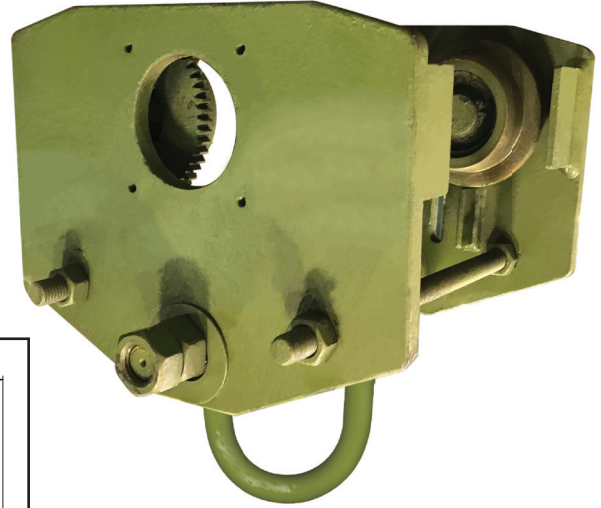
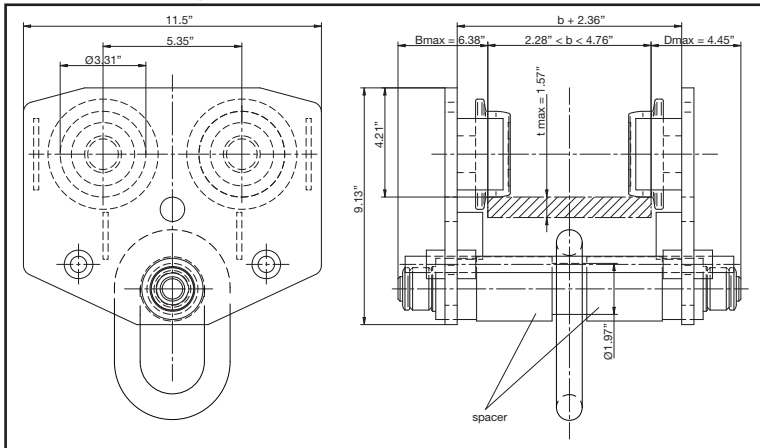


# Beam Trolleys | 1–3 Ton | JDN Model | Push/Motorized Trolley

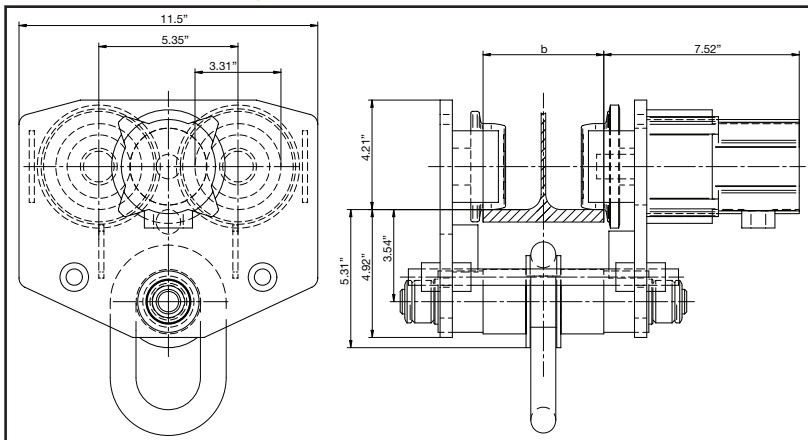
1 – 3 Ton Model



1–3T Push Trolley



1–3T Motorized Trolley



1–3T Trolley Pins

Model	Bottom Flange Width Range	Tip-to-Tip Pin Length	Shoulder-to-Shoulder Dimension
Pin I	2.28" – 4.76"	11"	4.65"
Pin II	4.80" – 7.04"	13 1/4"	7.17"
Pin III	7.08" – 9.80"	16"	9.45"
Pin IV	9.84" – 12.20"	18 1/2"	12.20"

1–3T

Trolley Type	Weight
Push	57.2 Lbs.
Motor	72.6 Lbs.

*Green shading reflects rental inventory.*