



THE LIFTING EXPERTS

(800) 878-7305

www.RentLGH.com

Rentals@RentLGH.com

Shackles | 120 - 300 Ton | Alloy Bolt Type

Material: bow and pin high tensile steel, Grade 8, quenched and tempered

Safety Factor: MBL equals 5 x WLL

Finish: hot dipped galvanized

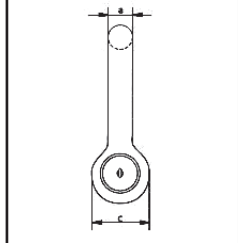
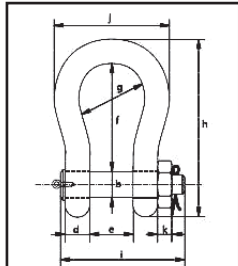
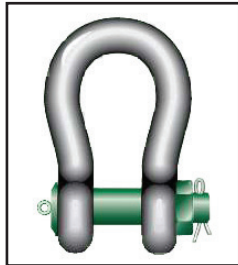
Temperature Range: -20°C up to +200° C

Certificates: at no extra charges this product can be supplied with a works

certificate, certificate of basic raw material, manufacturer test certificate, EC Declaration of Conformity and all shackles starting from 150 tons are supplied with a Lloyd's Register of Shipping Certificate on proof load

Note: +5% forging tolerance on inside width and length

P-6036



Specifications (mm)												
Working load limit	Diameter bow	Diameter pin	Diameter eye	Width eye	Width inside	Length inside	Width bow	Length	Length bolt	Width	Thickness nut	Weight each
tons	a mm	b mm	c mm	d mm	e mm	f mm	g mm	h mm	i mm	j mm	k mm	kg
120	95	95	208	91	147	400	238	647	440	428	50	243
150	105	108	238	102	169	410	275	688	490	485	60	353
200	120	130	279	113	179	513	290	838	520	530	60	518
250	130	140	299	118	205	554	305	904	560	565	65	628
300	140	150	325	123	205	618	305	996	575	585	70	750

Green shading reflects rental inventory.

Specifications (in)												
Working load limit	Diameter bow	Diameter pin	Diameter eye	Width eye	Width inside	Length inside	Width bow	Length	Length bolt	Width	Thickness nut	Weight each
tons	a in.	b in.	c in.	d in.	e in.	f in.	g in.	h in.	i in.	j in.	k in.	lbs.
120	3 3/4	3 3/4	8 3/16	3 19/32	5 25/32	15 3/4	9 3/8	25 15/32	17 7/16	16 27/32	1 31/32	243
150	4 1/8	4 1/4	9 3/8	4 1/32	6 21/32	16 5/32	10 13/16	27 3/32	19 7/32	19 3/32	2 3/8	353
200	4 23/32	5 1/8	10 31/32	4 7/16	7 1/16	20 3/16	11 13/32	33	20 15/32	20 7/8	2 3/8	518
250	5 1/8	5 1/2	11 25/32	4 21/32	8 1/16	21 13/16	12	35 19/32	22 1/16	22 1/4	2 9/16	628
300	5 1/2	5 29/32	12 25/32	4 27/32	8 1/16	24 11/32	12	39 7/32	22 5/8	23 1/32	2 3/4	750

Green shading reflects rental inventory.





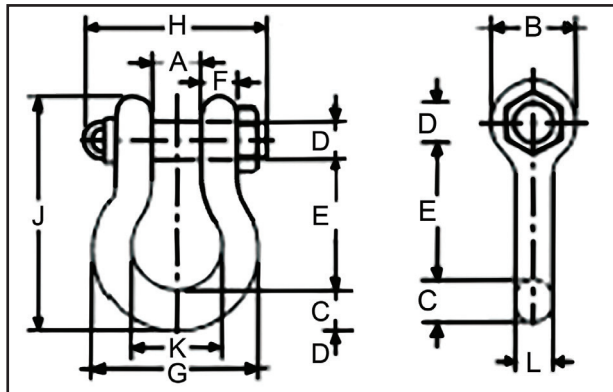
THE LIFTING EXPERTS

(800) 878-7305 www.RentLGH.com Rentals@RentLGH.com

Shackles | 30 - 300 Ton | Alloy Bolt Type

- Shackles are Quenched and Tempered and can meet DNV impact requirements of 42 joules at -20°C.
- Working Load Limit is permanently shown on every shackle.
- Alloy bows, Alloy bolts.
- Quenched and Tempered.
- All sizes are individually proof tested to 2.0 times the Working Load Limit.
- Shackles 200 metric tons and larger are provided as follows.
- Non Destructive Tested.
- Serialized Pin and Bow.
- Material Certification (chemical).
- Certification must be requested at time of order.
- Forged Alloy Steel 30 thru 175 metric tons. Cast Alloy Steel 200 thru 400 metric tons.
- Pins are galvanized and painted red.

G-2140 S-2140



Specifications				
Nominal Shackle Size (in.)	Working Load Limit* (t)	Model		2130 Weight Each (lbs.)
		G-2140 Galv.	S-2140 S.C.	
1 1/2	30	1021110	1021129	20.8
1 3/4	40	1021138	1021147	33.9
2	55	1021156	1021165	52.0
2 1/2	85	1021174	1021183	96.0
3	120	1021192	—	178.0
3 1/2	† 150	1021218	—	265.0
4	† 175	1021236	—	338.0
4 3/4**	† 200	1021414	—	450.0
5**	† 250	1021432	—	600.0
6**	† 300	1021450	—	775.0

Green shading reflects rental inventory.

Dimensions														
Nominal Shackle Size (in.)	Working Load Limit* (t)	Dimensions (in.)											Tolerance +/-	
		A	B	C	D	E	F	G	H	J	K	L	A	E
1 1/2	30	2.38	3.62	1.62	1.63	5.75	1.39	6.88	7.75	10.00	3.88	1.54	.13	.25
1 3/4	40	2.88	4.19	2.25	2.00	7.00	1.75	8.86	9.06	12.34	5.00	1.84	.13	.25
2	55	3.25	4.81	2.40	2.25	7.75	2.00	9.97	10.41	13.68	5.75	2.08	.13	.25
2 1/2	85	4.12	5.69	3.12	2.75	10.50	2.62	12.87	13.56	17.84	7.25	2.71	.25	.25
3	120	5.00	6.50	3.62	3.25	13.00	3.00	14.36	16.50	21.50	7.88	3.11	.25	.25
3 1/2	† 150	5.25	8.00	4.12	3.75	14.63	3.75	16.50	19.00	24.62	9.00	3.62	.25	.25
4	† 175	5.50	9.00	4.56	4.25	14.50	4.00	18.42	19.75	25.69	10.00	4.10	.25	.25
4 3/4**	† 200	7.25	10.50	6.00	4.75	15.62	3.75	21.00	20.50	29.25	11.00	4.50	.25	.25
5**	† 250	8.50	12.00	6.50	5.00	20.00	3.88	24.50	21.97	35.00	13.00	4.50	.25	.25
6**	† 300	8.38	12.00	6.75	6.00	19.50	4.75	25.00	24.35	35.25	13.00	5.00	.25	.25

*Note: Maximum Proof Load is 2.0 times the working load limit. Minimum ultimate load is 4 times the working load limit on 200 thru 400 metric tons.

For sizes 30 thru 175 metric tons, minimum ultimate load is 5.4 times the working load limit.

**Cast Alloy steel.

+ Furnished with round head bolts with welded handle.

Green shading reflects rental inventory.

