

Modular Spreader Beams | 6 - 24 Ton | Mod 24

NOTE: Top Slings shall be properly load-rated based on the specified angle used. LGH top sling inventory is based on Rental Center location availability.

- Rated at 24t WLL at 11 ft. span. See Load Table for WLL at spans greater than 11 ft.
- Base sling angle, α , 45 degrees or greater.
- End Units & Drop Links are rated at 12t (24t combined capacity).
- Bolt tightening torque: 110 pound-foot.
- Max number of struts allowed in spreader assembly: 5
- Assemble longer struts in the center of the spreader configuration
- Sling angle is crucial to safe use of spreader

Table 1: Component List

Part Ref:	Description	Item Weight lbs.
P1	End Unit (1 1/2 ft.)	36
P2	Drop Link	11
P3	6 ft. Strut	80
P4	4 ft. Strut	56
P5	2 ft. Strut	37
P6	1 ft. Strut	26
P7	17t Shackle	18
P8	12t Shackle	11
P9	M20x50 Grade 8.8 HT Bolts, Nuts & Washers	

*Green shading reflects rental inventory.
 •Beam weights calculated without top rigging.*

Typical Spreader Assembly

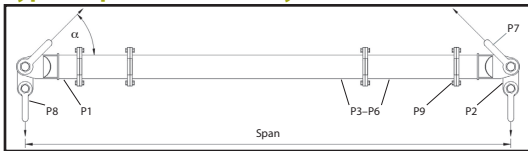


Table 2: Load V. Span

Span (ft)	Base to Sling Angle (BSA) α						Recommended Configuration EU - End Unit (1.5 ft)				Beam Weight (lbs.)					
	45°		60°		70°											
	WLL metric tons (tonnes)	Min. top sling length (ft.in)	WLL metric tons (tonnes)	Min. top sling length (ft.in)	WLL metric tons (tonnes)	Min. top sling length (ft.in)	EU	EU	EU	EU						
3	24	1'7"	24	2'6"	24	3'11"	EU	EU	—		151					
4	24	2'4"	24	3'6"	5'4"	37'6"	EU	1	EU	—		177				
5	24	3'0"	24	4'6"	24	6'10"	EU	2	EU	—		188				
6	24	3'8"	24	5'6"	24	8'4"	EU	2	1	EU	—		214			
7	24	4'6"	24	6'6"	24	9'8"	EU	4	EU	—		207				
8	24	5'2"	24	7'6"	24	11'2"	EU	4	1	EU	—		233			
9	24	5'11"	24	8'6"	24	12'8"	EU	6	EU	—		231				
10	24	6'7"	24	9'6"	24	14'1"	EU	6	1	EU	—		257			
11	22	7'4"	24	10'6"	24	15'7"	EU	6	2	EU	—		268			
12	19	8'0"	24	11'6"	24	17'0"	EU	2	6	1	EU	—		294		
13	16	8'8"	24	12'6"	24	18'6"	EU	4	6	EU	—		287			
14	13	9'5"	24	13'6"	24	20'0"	EU	4	6	1	EU	—		313		
15	11	10'1"	20	14'6"	24	21'5"	EU	6	6	EU	—		311			
16	10	10'10"	17	15'6"	24	22'11"	EU	6	6	1	EU	—		337		
17	8.6	11'6"	15	16'6"	24	24'5"	EU	6	6	2	EU	—		348		
18	7.4	12'2"	13	17'6"	20	25'10"	EU	1	6	6	2	EU	—		374	
19	6.5	12'11"	11	18'6"	18	27'4"	EU	6	6	4	EU	—		367		
20	5.6	13'7"	9.9	19'6"	15	28'8"	EU	1	6	6	4	EU	—		393	
21	5	14'5"	8.8	20'6"	14	30'2"	EU	6	6	6	EU	—		391		
22	4.4	15'1"	7.7	21'6"	12	31'8"	EU	6	6	6	1	EU	—		417	
23	3.8	15'10"	6.8	22'6"	10	33'1"	EU	6	6	6	2	EU	—		428	
24	3.4	16'6"	6	23'6"	9.6	34'7"	EU	1	6	6	6	2	EU	—		454
25	3	17'2"	5.3	24'6"	8.6	36'0"	EU	6	6	6	4	EU	—		447	
26	2.6	17'11"	4.7	25'6"	7.6	37'6"	EU	1	6	6	6	4	EU	—		473

*Green shading reflects rental inventory.
 •Beam weights calculated without top rigging.*