

Modular Spreader Beams | 10 - 50 Ton | Mod 50

NOTE: Top Slings shall be properly load-rated based on the specified angle used. LGH top sling inventory is based on Rental Center location availability.

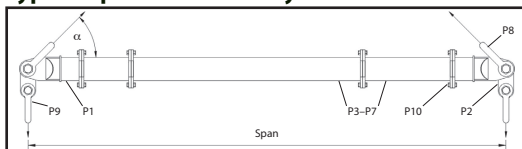
- Rated at 50t WLL at 20 ft. span. See Load Table for WLL at spans greater than 20 ft.
- Base sling angle, α , 45 degrees or greater.
- End Units & Drop Links are rated at 25t (50t combined capacity).
- Bolt tightening torque: 110 pound-foot.

Table 1: Component List

Part Ref:	Description	Item Weight lbs.
P1	End Unit (1 1/2 ft.)	84
P2	Drop Link	24
P3	12 ft. Strut	285
P4	6 ft. Strut	168
P5	3 ft. Strut	109
P6	2 ft. Strut	90
P7	1 ft. Strut	70
P8	35t Shackle	44
P9	35t Shackle	44
P10	M20x65 Grade 8.8 HT Bolts, Nuts & Washers	

Green shading reflects rental inventory.
 -Beam weights calculated without top rigging.

- Max number of struts allowed in spreader assembly: 5
- Assemble longer struts in the center of the spreader configuration
- Sling angle is crucial to safe use of spreader

Typical Spreader Assembly

Table 2: Load v. Span

Span (ft.)	Base to Sling Angle (BSA) α						Recommended Configuration EU - End Unit (1.5 ft)				Beam Weight (lbs.)					
	45°		60°		70°											
	WLL metric tons (tonnes)	Min. top sling length (ft in)	WLL metric tons (tonnes)	Min. top sling length (ft in)	WLL metric tons (tonnes)	Min. top sling length (ft in)	EU	EU	EU	EU						
3	50	1'5"	50	2'4"	50	3'8"	EU	EU	—		384					
4	50	2'1"	50	3'4"	50	5'2"	EU	1	EU	—		454				
5	50	2'10"	50	4'4"	50	6'7"	EU	2	EU	—		474				
6	50	3'7"	50	5'4"	50	8'1"	EU	3	EU	—		493				
7	50	4'4"	50	6'4"	50	9'6"	EU	3	1	EU	—		563			
8	50	5'0"	50	7'4"	50	11'0"	EU	3	2	EU	—		583			
9	50	5'8"	50	8'4"	50	12'6"	EU	6	EU	—		552				
10	50	6'5"	50	9'4"	50	13'11"	EU	6	1	EU	—		622			
11	50	7'1"	50	10'4"	50	15'5"	EU	6	2	EU	—		642			
12	50	7'10"	50	11'4"	50	16'11"	EU	6	3	EU	—		661			
13	50	8'6"	50	12'4"	50	18'4"	EU	3	6	1	EU	—		731		
14	50	9'2"	50	13'4"	50	19'10"	EU	3	6	2	EU	—		751		
15	50	9'11"	50	14'4"	50	21'2"	EU	12	EU	—		669				
16	48	10'7"	50	15'4"	50	22'8"	EU	12	1	EU	—		739			
17	44	11'4"	50	16'4"	50	24'2"	EU	12	2	EU	—		759			
18	41	12'0"	50	17'4"	50	25'7"	EU	12	3	EU	—		778			
19	37	12'8"	50	18'4"	50	27'1"	EU	3	12	1	EU	—		848		
20	33	13'6"	50	19'4"	50	28'6"	EU	3	12	2	EU	—		868		
21	30	14'2"	50	20'4"	50	30'0"	EU	6	12	EU	—		837			
22	27	14'11"	47	21'4"	50	31'6"	EU	6	12	1	EU	—		907		
23	24	15'7"	42	22'4"	50	32'11"	EU	6	12	2	EU	—		927		
24	22	16'4"	38	23'4"	50	34'5"	EU	6	12	3	EU	—		946		
25	19	17'0"	34	24'4"	50	35'11"	EU	3	6	12	1	EU	—		1016	
26	17	17'8"	30	25'4"	49	37'4"	EU	3	6	12	2	EU	—		1036	
27	16	18'5"	28	26'4"	45	38'10"	EU	12	12	EU	—		954			
28	14	19'1"	25	27'4"	41	40'2"	EU	12	12	1	EU	—		1024		
29	13	19'10"	23	28'4"	37	41'8"	EU	12	12	2	EU	—		1044		
30	12	20'6"	21	29'4"	34	43'2"	EU	12	12	3	EU	—		1063		
31	11	21'2"	19	30'4"	31	44'7"	EU	3	12	12	1	EU	—		1133	
32	10	21'11"	17	31'4"	28	46'1"	EU	3	12	12	2	EU	—		1153	
33	9.3	22'7"	16	32'4"	26	47'7"	EU	6	12	12	EU	—		1122		
34	8.4	23'5"	14	33'4"	24	49'0"	EU	6	12	12	1	EU	—		1192	
35	7.7	24'1"	13	34'4"	21	50'6"	EU	6	12	12	2	EU	—		1212	
36	7	24'10"	12	35'4"	20	51'11"	EU	6	12	12	3	EU	—		1231	
37	6.3	25'6"	11	36'4"	18	53'5"	EU	6	12	12	3	1	EU	—		1301
38	5.7	26'2"	10	37'4"	16	54'11"	EU	6	12	12	3	2	EU	—		1321
39	5.3	26'11"	9.6	38'4"	15	56'4"	EU	12	12	6	6	EU	—		1290	
40	5	27'7"	9	39'4"	14	57'10"	EU	12	12	12	1	EU	—		1309	
41	4.5	28'4"	8.3	40'4"	13	59'2"	EU	12	12	12	2	EU	—		1329	
42	4.1	29'0"	7.5	41'4"	12	60'8"	EU	12	12	12	2	1	EU	—		1399