

## Modular Spreader Beams | 35 - 110 Ton | Mod 110

**NOTE:** Top Slings shall be properly load-rated based on the specified angle used. LGH top sling inventory is based on Rental Center location availability.

- Rated at 110t WLL at 24 ft. span. See Load Table for WLL at spans greater than 24 ft.
- Base sling angle,  $\alpha$ , 45 degrees or greater.
- End Units & Drop Links are rated at 55t (110t combined capacity).
- Bolt tightening torque: 110 pound-foot.

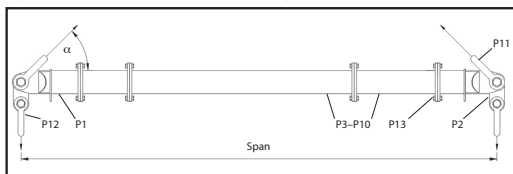
**Table 1: Component List**

Part Ref:	Description	Item Weight lbs.
P1	End Unit (3 ft.)	379
P2	Drop Link	99
P3	20 ft. Strut	1,170
P5	10 ft. Strut	650
P6	8 ft. Strut	540
P7	6 ft. Strut	440
P8	4 ft. Strut	345
P9	2 ft. Strut	230
P10	1 ft. Strut	185
P11	85t Shackle	137
P12	55t Shackle	87
P13	M20x65 HT Bolts, Nuts & Washers	

Green shading reflects rental inventory.  
• Beam weights calculated without top rigging.

- Max number of struts allowed in spreader assembly: 6
- Assemble longer struts in the center of the spreader configuration
- Sling angle is crucial to safe use of spreader. Do not rig the lower slings more than 6 degrees from vertical.

### Typical Spreader Assembly



**Table 2: Load v. Span**

Span (ft)	Base to Sling Angle (BSA) $\alpha$						Recommended Configuration EU – End Unit (3 ft.)				Beam Weight (lbs.)			
	45°		60°		70°									
	WLL metric tons (tonnes)	Min. top sling length (ft in)	WLL metric tons (tonnes)	Min. top sling length (ft in)	WLL metric tons (tonnes)	Min. top sling length (ft in)								
6	110	3'1"	110	4'10"	110	7'7"	EU	EU		—	1,404			
7	110	3'10"	110	5'10"	110	9'1"	EU	1	EU		1,589			
8	110	4'6"	110	6'10"	110	10'6"	EU	2	EU		1,636			
9	110	5'2"	110	7'10"	110	12'0"	EU	2	1	EU	1,821			
10	110	5'11"	110	8'10"	110	13'6"	EU	4	EU		1,757			
11	110	6'7"	110	9'10"	110	14'11"	EU	4	1	EU	1,942			
12	110	7'4"	110	10'10"	110	16'5"	EU	6	EU		1,846			
13	110	8'0"	110	11'10"	110	17'10"	EU	6	1	EU	2,031			
14	110	8'8"	110	12'10"	110	19'4"	EU	8	EU		1,946			
15	110	9'5"	110	13'10"	110	20'10"	EU	8	1	EU	2,131			
16	110	10'1"	110	14'10"	110	22'2"	EU	10	EU		2,046			
17	110	10'11"	110	15'10"	110	23'8"	EU	10	1	EU	2,231			
18	110	11'7"	110	16'10"	110	25'1"	EU	10	2	EU	2,286			
19	110	12'4"	110	17'10"	110	26'7"	EU	2	10	1	EU	2,471		
20	110	13'0"	110	18'10"	110	28'1"	EU	10	4	EU	2,401			
21	110	13'8"	110	19'10"	110	29'6"	EU	4	10	1	EU	2,586		
22	110	14'5"	110	20'10"	110	31'0"	EU	10	6	EU	2,496			
23	110	15'1"	110	21'10"	110	32'6"	EU	6	10	1	EU	2,681		
24	110	15'10"	110	22'10"	110	33'11"	EU	10	8	EU	2,596			
25	110	16'6"	110	23'10"	110	35'5"	EU	8	10	1	EU	2,781		
26	110	17'2"	110	24'10"	110	36'10"	EU	20	EU		2,576			
27	110	17'11"	110	25'10"	110	38'4"	EU	20	1	EU	2,761			
28	110	18'7"	110	26'10"	110	39'10"	EU	20	2	EU	2,806			
29	108	19'4"	110	27'10"	110	41'2"	EU	2	20	1	EU	2,991		
30	103	20'0"	110	28'10"	110	42'8"	EU	20	4	EU	2,921			
31	96	20'10"	110	29'10"	110	44'2"	EU	4	20	1	EU	3,106		
32		21'6"	110	30'10"	110	45'7"	EU	20	6	EU	3,016			
33	84	22'2"	110	31'10"	110	47'1"	EU	6	20	1	EU	3,201		
34		22'11"	110	32'10"	110	48'6"	EU	20	8	EU	3,116			
35	74	23'7"	110	33'10"	110	50'0"	EU	8	20	1	EU	3,301		
36	70	24'4"	110	34'10"	110	51'6"	EU	20	10	EU	3,226			
37	65	25'0"	110	35'10"	110	52'11"	EU	10	20	1	EU	3,411		
38	60	25'8"	106	36'10"	110	54'5"	EU	2	20	10	EU	3,456		
39	56	26'5"	98	37'10"	110	55'10"	EU	2	20	10	1	EU	3,641	
40	52	27'1"	92	38'10"	110	57'4"	EU	4	20	10	EU	3,571		
41	48	27'10"	85	39'10"	110	58'10"	EU	4	20	10	1	EU	3,756	
42	46	28'6"	81	40'10"	110	60'2"	EU	6	20	10	EU	3,666		
43	43	29'2"	75	41'10"	110	61'8"	EU	6	20	10	1	EU	3,851	
44	40	29'11"	70	42'10"	110	63'2"	EU	8	20	10	EU	3,766		
45	37	30'8"	65	43'10"	105	64'7"	EU	8	20	10	1	EU	3,951	
46	35	31'5"	62	44'10"	99		EU	20	20	EU		3,746		
47	32	32'1"	57	45'10"	92	67'6"	EU	20	20	1	EU	3,931		
48	30	32'10"	54	46'10"	87	69'0"	EU	20	20	2	EU	3,976		
49	28	33'6"	50	47'10"	81	70'6"	EU	2	20	20	1	EU	4,161	
50	26	34'2"	47	48'10"	76	71'11"	EU	20	20	4	EU	4,091		
51	24	34'11"	44	49'10"	71	73'5"	EU	4	20	20	1	EU	4,276	
52	23	35'7"	41	50'10"	67	74'11"	EU	20	20	6	EU	4,186		
53	21	36'4"	38	51'10"	62	76'4"	EU	6	20	20	1	EU	4,371	
54	20	37'0"	37	52'10"	59	77'10"	EU	20	20	8	EU	4,286		
55	19	37'8"	34	53'10"	55	79'2"	EU	8	20	20	1	EU	4,471	
56		38'5"	32	54'10"	52	80'8"	EU	20	20	10	EU	4,396		
57	16	39'1"	30	55'10"	48	82'2"	EU	10	20	20	1	EU	4,581	
58		39'7"	28	56'7"	46	83'5"	EU	10	20	20	2	EU	4,626	
59	14	40'7"	26	57'10"	42	85'1"	EU	2	10	20	20	1	EU	4,811

Green shading reflects rental inventory.  
• Beam weights calculated without top rigging.