

Modular Spreader Beams | 35 - 170 Ton | Mod 110H

NOTE: Top Slings shall be properly load-rated based on the specified angle used. LGH top sling inventory is based on Rental Center location availability.

- Rated at 170t WLL at 28 ft. span. See Load Table for WLL at spans greater than 28 ft.
- Base sling angle, α , 45 degrees or greater.
- End Units & Drop Links are rated at 85t (170t combined capacity).
- Bolt tightening torque: 110 pound-foot.

Table 1: Component List

Part Ref:	Description	Item Weight lbs.
P1	End Unit (3 ft.)	384
P2	Drop Link	171
P3	20 ft. Strut	1,170
P5	10 ft. Strut	650
P6	8 ft. Strut	540
P7	6 ft. Strut	440
P8	4 ft. Strut	345
P9	2 ft. Strut	230
P10	1 ft. Strut	185
P11	120t Shackle	243
P12	85t Shackle	137
P13	M20x65 HT Bolts, Nuts & Washers	

Green shading reflects rental inventory.
 • Beam weights calculated without top rigging.

- Max number of struts allowed in spreader assembly: 6
- Assemble longer struts in the center of the spreader configuration
- Sling angle is crucial to safe use of spreader. Do not rig the lower slings more than 6 degrees from vertical.

Typical Spreader Assembly

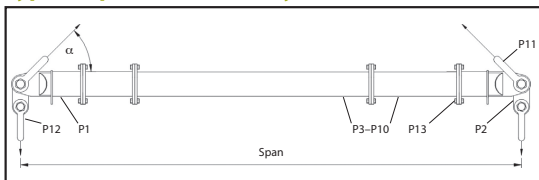


Table 2: Load v. Span

Span (ft)	Base to Sling Angle (BSA) α						Recommended Configuration EU - End Unit (3 ft)				Beam Weight (lbs.)				
	45°		60°		70°										
	WLL metric tons (tonnes)	Min. top sling length (ft in)	WLL metric tons (tonnes)	Min. top sling length (ft in)	WLL metric tons (tonnes)	Min. top sling length (ft in)									
6	167	2'10"	170	4'7"	170	7'5"	EU	EU	—	—	1,870				
7	167	3'6"	170	5'7"	170	8'10"	EU	1	EU	—	2,053				
8	167	4'2"	170	6'7"	170	10'4"	EU	2	EU	—	2,100				
9	167	4'11"	170	7'7"	170	11'8"	EU	2	1	EU	—	2,285			
10	167	5'8"	170	8'7"	170	13'2"	EU	4	EU	—	—	2,221			
11	167	6'5"	170	9'7"	170	14'8"	EU	4	1	EU	—	2,406			
12	167	7'1"	170	10'7"	170	16'1"	EU	6	EU	—	—	2,310			
13	167	7'10"	170	11'7"	170	17'7"	EU	6	1	EU	—	2,495			
14	167	8'6"	170	12'7"	170	19'0"	EU	8	EU	—	—	2,410			
15	167	9'2"	170	13'7"	170	20'6"	EU	8	1	EU	—	2,595			
16	167	9'11"	170	14'7"	170	22'0"	EU	10	EU	—	—	2,510			
17	167	10'7"	170	15'7"	170	22'0"	EU	10	1	EU	—	2,695			
18	167	11'4"	170	16'7"	170	24'11"	EU	10	2	EU	—	2,750			
19	167	12'0"	170	17'7"	170	26'5"	EU	2	10	1	EU	—	2,935		
20	167	12'8"	170	18'7"	170	27'10"	EU	10	4	EU	—	—	2,865		
21	160	13'5"	170	19'7"	170	29'4"	EU	4	10	1	EU	—	—	3,050	
22	155	14'1"	170	20'7"	170	30'8"	EU	10	6	EU	—	—	2,960		
23	148	14'10"	170	21'7"	170	32'2"	EU	6	10	1	EU	—	—	3,145	
24	142	15'7"	170	22'7"	170	33'8"	EU	10	8	EU	—	—	3,060		
25	135	16'4"	170	23'7"	170	35'1"	EU	8	10	1	EU	—	—	3,245	
26	128	17'0"	170	24'7"	170	36'7"	EU	20	EU	—	—	—	3,040		
27	121	17'8"	170	25'7"	170	38'1"	EU	20	1	EU	—	—	3,225		
28	115	18'5"	170	26'7"	170	39'6"	EU	20	2	EU	—	—	3,270		
29	108	19'1"	170	27'7"	170	41'0"	EU	2	20	1	EU	—	—	3,455	
30	103	19'10"	170	28'7"	170	42'5"	EU	20	4	EU	—	—	3,385		
31	96	20'6"	168	29'7"	170	43'11"	EU	4	20	1	EU	—	—	3,570	
32	91	21'2"	158	30'7"	170	45'5"	EU	20	6	EU	—	—	3,480		
33	84	21'11"	147	31'7"	170	46'10"	EU	6	20	1	EU	—	—	3,665	
34	80	22'7"	139	32'7"	170	48'4"	EU	20	8	EU	—	—	3,580		
35	74	23'4"	129	33'7"	170	49'8"	EU	8	20	1	EU	—	—	3,765	
36	70	24'0"	122	34'7"	170	51'2"	EU	20	10	EU	—	—	3,690		
37	65	24'8"	113	35'7"	170	52'8"	EU	10	20	1	EU	—	—	3,875	
38	60	25'6"	106	36'7"	169	54'1"	EU	2	20	10	EU	—	—	3,920	
39	56	26'2"	98	37'7"	156	55'7"	EU	2	20	10	1	EU	—	—	4,105
40	52	26'11"	92	38'7"	146	57'1"	EU	4	20	10	EU	—	—	4,035	
41	48	27'7"	85	39'7"	136	58'6"	EU	4	20	10	1	EU	—	—	4,220
42	46	26'11"	81	40'7"	130	57'1"	EU	6	20	10	EU	—	—	4,130	
43	43	29'0"	75	41'7"	121	61'5"	EU	6	20	10	1	EU	—	—	4,315
44	40	29'8"	70	42'7"	113	62'11"	EU	8	20	10	EU	—	—	4,230	
45	37	30'5"	65	43'7"	105	64'5"	EU	8	20	10	1	EU	—	—	4,415
46	35	31'1"	62	44'7"	99	65'10"	EU	20	EU	—	—	—	—	4,210	
47	32	31'10"	57	45'7"	92	67'4"	EU	20	20	1	EU	—	—	4,395	
48	30	32'6"	54	46'7"	87	68'10"	EU	20	20	2	EU	—	—	4,440	
49	28	33'2"	50	47'7"	81	70'2"	EU	2	20	20	1	EU	—	—	4,625
50	26	33'11"	47	48'7"	76	71'8"	EU	20	20	4	EU	—	—	4,555	
51	24	34'7"	44	49'7"	71	73'1"	EU	4	20	20	1	EU	—	—	4,740
52	23	35'5"	41	50'7"	67	74'7"	EU	20	20	6	EU	—	—	4,650	
53	21	36'1"	38	51'7"	62	76'1"	EU	6	20	20	1	EU	—	—	4,835
54	20	36'10"	37	50'7"	59	74'7"	EU	20	20	8	EU	—	—	4,750	
55	19	37'6"	34	53'7"	55	79'0"	EU	8	20	20	1	EU	—	—	4,935
56	17	38'2"	32	54'7"	52	80'5"	EU	20	20	10	EU	—	—	4,860	
57	16	38'11"	30	55'7"	48	81'11"	EU	10	20	20	1	EU	—	—	5,045
58	15	39'10"	28	56'7"	46	83'5"	EU	10	20	20	2	EU	—	—	4,626
59	14	40'4"	26	57'7"	42	84'10"	EU	2	10	20	20	1	EU	—	5,275