

Modular Spreader Beams | 110 Ton | Mod 400/110

NOTE: Top Slings shall be properly load-rated based on the specified angle used. LGH top sling inventory is based on Rental Center location availability.

- Rated at 110t WLL at 76 ft. span.
- Base sling angle, α , 45 degrees or greater.
- End Units & Drop Links are rated at 55t (110t combined capacity).
- Bolt tightening torque: 184 pound-foot (M24); 110 pound-foot (M20)

Table 1: Component List

Part Ref:	Description	Weight/Item lbs.
P1	Mod 110 End Unit	379
P2	Mod 110 Drop Link	99
P3	20 ft. Strut	3049
P4	10 ft. Strut	1744
P5	5 ft. Strut	1094
P6	4 ft. Strut	963
P7	3 ft. Strut	832
P8	2 ft. Strut	701
P9	1 ft. Strut	571
P10	Mod 400/110 Cone Adaptor	441
P11	85t Bolt Shackle	137
P12	55t Bolt Shackle	87
P13	MOD: 400 M24 x 90, Grade 8.8, HT Bolts, Nuts & Washers MOD: 110 M20 x 65, Grade 8.8, HT Bolts, Nuts & Washers	

Green shading reflects rental inventory.
•Beam weights calculated without top rigging.

- Max number of struts allowed in spreader assembly: 5
- Assemble longer struts in the center of the spreader configuration
- Sling angle is crucial to safe use of spreader. Do not rig the lower slings more than 6 degrees from vertical.

Typical Spreader Assembly

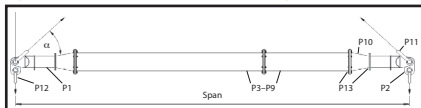


Table 2: Load v. Span

Span (ft)	Base to Sling Angle (BSA) α						Recommended Configuration EU - End Unit (3 ft), CA - Cone Adaptor (2 ft)						Beam Weight (lbs.)					
	45°		60°		70°		To calculate the WLL at intermediate spans utilizing the 1ft strut, round up the span to the next longest span in Table 2, and use the stated WLL.											
	WLL metric tons (tonnes)	Min. top sling length (ft in)	WLL metric tons (tonnes)	Min. top sling length (ft in)	WLL metric tons (tonnes)	Min. top sling length (ft in)												
6	110	3'1"	110	4'10"	110	7'7"	EU	EU	—				1,436					
10	110	5'11"	110	8'10"	110	13'6"	EU	CA	CA	EU	—			2,252				
12	110	7'4"	110	10'10"	110	16'5"	EU	CA	2	CA	EU	—		2,968				
14	110	8'8"	110	12'10"	110	19'4"	EU	CA	4	CA	EU	—		3,132				
16	110	10'1"	110	14'10"	110	22'2"	EU	CA	5	1	CA	EU	—		3,931			
18	110	11'7"	110	16'10"	110	25'1"	EU	CA	5	3	CA	EU	—		4,178			
20	110	13'0"	110	18'10"	110	28'1"	EU	CA	10	CA	EU	—			3,914			
22	110	14'5"	110	20'10"	110	31'0"	EU	CA	10	2	CA	EU	—		4,630			
24	110	15'10"	110	22'10"	110	33'11"	EU	CA	10	4	CA	EU	—		4,794			
26	110	17'2"	110	24'10"	110	36'10"	EU	CA	5	10	1	CA	EU	—		5,593		
28	110	18'7"	110	26'10"	110	39'10"	EU	CA	5	10	3	CA	EU	—		5,840		
30	110	20'0"	110	28'10"	110	42'8"	EU	CA	20	CA	EU	—			5,217			
32	110	21'6"	110	30'10"	110	45'7"	EU	CA	20	2	CA	EU	—		5,933			
34	110	22'11"	110	32'10"	110	48'6"	EU	CA	20	4	CA	EU	—		6,097			
36	110	24'4"	110	34'10"	110	51'6"	EU	CA	5	20	1	CA	EU	—		6,896		
38	110	25'8"	110	36'10"	110	54'5"	EU	CA	5	20	3	CA	EU	—		7,143		
40	110	27'1"	110	38'10"	110	57'4"	EU	CA	10	20	CA	EU	—		6,879			
42	110	28'6"	110	40'10"	110	60'2"	EU	CA	10	20	2	CA	EU	—		7,595		
44	110	29'11"	110	42'10"	110	63'2"	EU	CA	10	20	4	CA	EU	—		7,759		
46	110	31'5"	110	44'10"	110	66'1"	EU	CA	10	20	5	1	CA	EU	—		8,558	
48	110	32'10"	110	46'10"	110	69'0"	EU	CA	10	20	5	3	CA	EU	—		8,805	
50	110	34'2"	110	48'10"	110	71'11"	EU	CA	20	20	CA	EU	—			8,182		
52	110	35'7"	110	50'10"	110	74'11"	EU	CA	20	2	CA	EU	—		8,898			
54	110	37'0"	110	52'10"	110	77'10"	EU	CA	20	20	4	CA	EU	—		9,062		
56	110	38'5"	110	54'10"	110	80'8"	EU	CA	1	20	20	5	CA	EU	—		9,861	
58	110	39'10"	110	56'10"	110	83'7"	EU	CA	3	20	20	5	CA	EU	—		10,108	
60	110	41'3"	110	58'10"	110	86'7"	EU	CA	20	20	10	CA	EU	—		9,844		
62	110	42'8"	110	60'10"	110	89'6"	EU	CA	10	20	20	2	CA	EU	—		10,560	
64	99	44'1"	110	62'10"	110	92'5"	EU	CA	10	20	20	4	CA	EU	—		10,724	
66	90	45'6"	110	64'10"	110	95'4"	EU	CA	10	20	20	1	5	CA	EU	—		11,523
68	82	47'0"	110	66'10"	110	98'3"	EU	CA	10	20	20	3	5	CA	EU	—		11,770
70	74	48'4"	110	68'10"	110	101'2"	EU	CA	20	20	20	CA	EU	—			11,147	
72	66	49'9"	110	70'10"	110	104'1"	EU	CA	20	20	2	CA	EU	—		11,863		
74	59	51'2"	107	72'10"	110	107'0"	EU	CA	20	20	20	4	CA	EU	—		12,027	
76	53	52'6"	97	74'10"	110	110'0"	EU	CA	1	20	20	20	5	CA	EU	—		12,826
78	47	54'0"	87	76'10"	110	112'10"	EU	CA	3	20	20	20	5	CA	EU	—		13,087

Green shading reflects rental inventory.
•Beam weights calculated without top rigging and may vary depending on strut configuration.
*Spans available in 1 foot increments.