

Modular Spreader Beams | 104 - 300 Ton | Mod 1000/300

Table 2: Load v. Span

Span (ft)	Base to Sling Angle (BSA) α						Recommended Configuration EU – End Unit (3 ft.)						Beam Weight (lbs.)		
	45°		60°		70°		To calculate the WLL at intermediate spans utilising the 1ft strut, round up the span to the next longest span in Table 2, and use the stated WLL.								
	WLL metric tons (tonnes)	Min. top sling length (ft in)	WLL metric tons (tonnes)	Min. top sling length (ft in)	WLL metric tons (tonnes)	Min. top sling length (ft in)	EU	CA	CA	EU	CA	EU			
10	203	4'11"	300	7'11"	300	6'7"	EU	CA	CA	EU	—	6,098			
15	203	9'5"	300	12'11"	300	9'7"	EU	CA	5	CA	EU	—	8,170		
20	203	12'0"	300	17'11"	300	12'6"	EU	CA	10	CA	EU	—	9,063		
25	203	15'6"	300	22'11"	300	15'5"	EU	CA	10	5	CA	EU	—	12,930	
30	203	19'1"	300	27'11"	300	18'4"	EU	CA	20	CA	EU	—	10,858		
35	203	22'7"	300	32'11"	300	49'0"	EU	CA	20	5	CA	EU	—	12,930	
40	203	26'1"	300	37'11"	300	24'2"	EU	CA	20	10	CA	EU	—	13,823	
45	203	29'8"	300	42'11"	300	27'1"	EU	CA	30	5	CA	EU	—	14,728	
50	203	33'2"	300	47'11"	300	30'0"	EU	CA	10	30	CA	EU	—	15,621	
55	203	36'9"	300	52'11"	300	32'11"	EU	CA	10	30	5	CA	EU	—	17,693
60	203	40'4"	300	57'11"	300	35'11"	EU	CA	20	30	CA	EU	—	17,422	
65	203	43'10"	300	62'11"	300	38'10"	EU	CA	20	30	5	CA	EU	—	19,488
70	203	47'5"	300	67'11"	300	41'8"	EU	CA	20	30	10	CA	EU	—	20,381
75	203	50'10"	300	72'11"	300	44'7"	EU	CA	30	30	5	CA	EU	—	21,286
80	203	54'5"	300	77'11"	300	47'7"	EU	CA	30	30	10	CA	EU	—	22,179
85	190	57'11"	300	82'11"	300	50'6"	EU	CA	30	30	10	5	CA	EU	24,251
90	163	61'6"	290	87'11"	300	53'5"	EU	CA	20	30	30	CA	EU	—	23,974
95	130	65'0"	235	92'11"	300	56'4"	EU	CA	20	30	30	5	CA	EU	26,046
100	104	68'7"	190	97'11"	300	59'4"	EU	CA	20	30	30	10	CA	EU	26,939

Green shading reflects rental inventory.
 •Beam weights calculated without top rigging and may vary depending on strut configuration.
 *Spans available in 1 foot increments

NOTE: Top Slings shall be properly load-rated based on the specified angle used. LGH top sling inventory is based on Rental Center location availability.

- Rated at 300t WLL at 100 ft. span (60 degrees Base Sling Angle).
- End Units & Drop Links are rated at 150t (300t combined lift).
- Base sling angle, α, 45 degrees or greater.

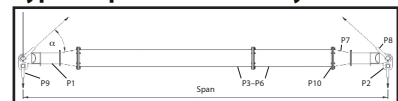
Table 1: Component List

Part Ref:	Description	Weight / Item (lbs.)
P1	End Unit (MOD 400)	1,500
P2	Drop Link (MOD 400)	397
P3	30 ft. Strut	6,558
P4	20 ft. Strut	4,760
P5	10 ft. Strut	2,965
P6	5 ft. Strut	2,072
P7	MOD 1000 Cone Adaptor	1,190
P8	200t Wide Body Shackle	452
P9	150t Wide Body Shackle	309
P10	M24x90 Grade 8.8 HT Bolts, Nuts & Washers	

Green shading reflects rental inventory.
 •Beam weights calculated without top rigging.

- Max number of struts allowed in spreader assembly: 5
- Assemble longer struts in the center of the spreader configuration
- Sling angle is crucial to use of spreader. Do not rig the lower slings more than 6 degrees from vertical.
- Bolt tightening torque: 184 Pound-Foot. Spanner size required: 36mm.
- Recommended additional equipment: Torque Wrench, Podger Spanner and Ring Spanner.

Typical Spreader Assembly



P8 represents Modular 400 struts used to create beam spans increased in 1 foot increments.
 Mod 400 struts can be inserted between the Mod 1000 Cone Adaptors and the Mod 400 End Unites. However, the following restrictions apply:
 *At least 50% of the spreader must be Mod 1000 struts.
 *A maximum of 3 Mod 400 struts can be assembled per side.