

Shackles | .33 - 55 Ton | Screw Pin

Material: bow and pin high tensile steel, Grade 6, quenched and tempered

Safety Factor: MBL equals 6 x WLL

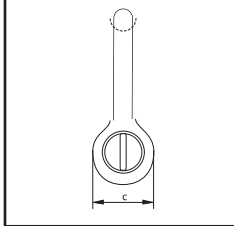
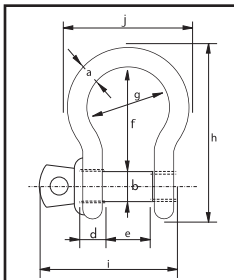
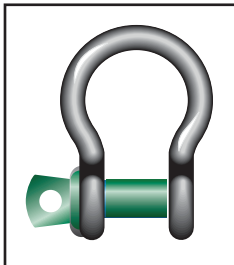
Standard: En 13889 and meets performance requirements of US Fed. Spec. RR-C-271 Type IVA Class 2, Grade A

Finish: hot dipped galvanized

Temperature Range: -20°C up to +200° C

Certificates: at no extra charges this product can be supplied with a works certificate, certificate of basic raw material, manufacturer test certificate and/or EC Declaration of Conformity.

G-4161



Specifications (mm)											
Working Load Limit	Diameter Bow	Diameter Pin	Diameter Eye	Width Eye	Width Inside	Length Inside	Width Bow	Length	Length Bolt	Width	Weight Each
tons	a mm	b mm	c mm	d mm	e mm	f mm	g mm	h mm	i mm	j mm	kg
0.33	5	6	12	5	9.5	22	16	36	29.5	26	0.02
0.5	7	8	16.5	7	12	29	20	48.5	38	34	0.05
0.75	9	10	20	9	13.5	32	22	56	46.5	40	0.1
1	10	11	22.5	10	17	36.5	26	63.5	54	46	0.14
1.5	11	13	26.5	11	19	43	29	74	59.5	51	0.19
2	13.5	16	34	13	22	51	32	89	73	58	0.36
3.25	16	19	40	16	27	64	43	110	89	75	0.63
4.75	19	22	46	19	31	76	51	129	103	89	1.01
6.5	22	25	52	22	36	83	58	144	119	102	1.5
8.5	25	28	59	25	43	95	68	164	137	118	2.21
9.5	28	32	66	28	47	108	75	185	153	131	3.16
12	32	35	72	32	51	115	83	201	170	147	4.31
13.5	35	38	80	35	57	133	92	227	186	162	5.55
17	38	42	88	38	60	146	99	249	203	175	7.43
25	45	50	103	45	74	178	126	300	243	216	12.84
35	50	57	111	50	83	197	138	331	272	238	18.15
42.5	57	65	130	57	95	222	160	377	310	274	26.29
55	65	70	145	65	105	260	180	433	344	310	37.6

Green shading reflects rental inventory.

Specifications (in.)											
Working Load Limit	Diameter Bow	Diameter Pin	Diameter Eye	Width Eye	Width Inside	Length Inside	Width Bow	Length	Length Bolt	Width	Weight Each
tons	a in.	b in.	c in.	d in.	e in.	f in.	g in.	h in.	i in.	j in.	lbs.
0.33	3/16	1/4	1/2	3/16	3/8	7/8	5/8	1 ^{13/32}	1 ^{7/32}	1 ^{1/32}	0.05
0.5	1/4	5/16	21/32	9/32	15/32	1 ^{9/32}	25/32	2 ^{29/32}	1 ^{1/2}	1 ^{11/32}	0.11
0.75	5/16	3/8	25/32	11/32	17/32	1 ^{1/4}	7/8	2 ^{7/32}	1 ^{27/32}	1 ^{9/16}	0.22
1	3/8	7/16	7/8	13/32	21/32	1 ^{1/16}	1 ^{1/32}	2 ^{1/2}	2 ^{7/8}	1 ^{13/16}	0.3
1.5	7/16	1/2	1 ^{1/32}	7/16	3/4	1 ^{11/16}	1 ^{5/32}	2 ^{29/32}	2 ^{11/32}	2	0.42
2	1/2	5/8	1 ^{11/32}	1/2	7/8	2	1 ^{1/4}	3 ^{1/2}	2 ^{7/8}	2 ^{9/32}	0.79
3.25	5/8	3/4	1 ^{9/16}	5/8	1 ^{1/16}	2 ^{17/32}	1 ^{11/16}	4 ^{11/32}	3 ^{1/2}	2 ^{15/16}	1.38
4.75	3/4	7/8	1 ^{13/16}	3/4	1 ^{7/32}	3	2	5 ^{3/32}	4 ^{7/16}	3 ^{1/2}	2.22
6.5	7/8	1	2 ^{7/16}	7/8	1 ^{13/32}	3 ^{9/32}	2 ^{7/32}	5 ^{21/32}	4 ^{7/16}	4 ^{1/32}	3.31
8.5	1	1 ^{1/8}	2 ^{3/16}	31/32	1 ^{11/16}	3 ^{3/4}	2 ^{11/16}	6 ^{15/32}	5 ^{13/32}	4 ^{21/32}	4.86
9.5	1 ^{1/8}	1 ^{1/4}	2 ^{39/32}	1 ^{3/32}	1 ^{27/32}	4 ^{1/4}	2 ^{15/16}	7 ^{9/32}	6 ^{1/32}	5 ^{5/32}	6.97
12	1 ^{1/4}	1 ^{3/8}	2 ^{27/32}	1 ^{1/4}	2	4 ^{17/32}	3 ^{9/32}	7 ^{29/32}	6 ^{11/16}	5 ^{25/32}	9.49
13.5	1 ^{3/8}	1 ^{1/2}	3 ^{3/32}	1 ^{3/8}	2 ^{1/4}	5 ^{1/4}	3 ^{5/8}	8 ^{15/16}	7 ^{5/16}	6 ^{3/8}	12.24
17	1 ^{1/2}	1 ^{5/8}	3 ^{15/32}	1 ^{1/2}	2 ^{3/8}	5 ^{3/4}	3 ^{29/32}	9 ^{13/16}	8	6 ^{7/8}	16.37
25	1 ^{3/4}	2	4 ^{7/16}	1 ^{25/32}	2 ^{29/32}	7	4 ^{31/32}	11 ^{13/16}	9 ^{9/16}	8 ^{1/2}	28.31
35	2	2 ^{1/4}	4 ^{3/8}	1 ^{31/32}	3 ^{7/32}	7 ^{3/4}	5 ^{7/16}	13 ^{1/32}	10 ^{23/32}	9 ^{5/8}	40.01
42.5	2 ^{1/4}	2 ^{9/16}	5 ^{1/8}	2 ^{1/4}	3 ^{3/4}	8 ^{3/4}	6 ^{7/16}	14 ^{27/32}	12 ^{7/32}	10 ^{25/32}	57.96
55	2 ^{1/2}	2 ^{3/4}	5 ^{23/32}	2 ^{9/16}	4 ^{1/8}	10 ^{1/4}	7 ^{3/32}	17 ^{1/16}	13 ^{17/32}	12 ^{7/32}	82.89

Green shading reflects rental inventory.

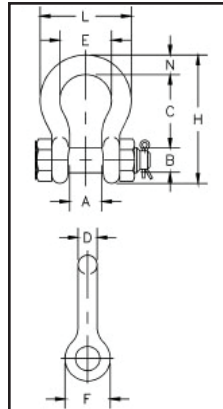
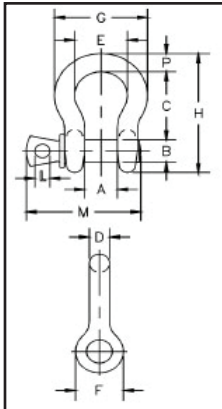
Shackles | .33 - 55 Ton | Screw Pin

- Shackles are Quenched and Tempered and can meet DNV impact requirements of 42 joules at -20°C.
- Working Load Limit permanently shown on every shackle.
- Forged – Quenched and Tempered, with alloy pins.
- Capacities 1/3 thru 55 metric tons.
- Look for the Red Pin®...the mark of genuine Crosby quality.
- Shackles can be furnished proof tested with certificates to designated standards, such as ABS, DNV, Lloyds, or other certification.
- Charges for proof testing and material certification available when requested at the time of order.
- Hot Dip galvanized or Self Colored.
- Fatigue rated.

G-209 S-209



G-213 S-213



Specifications							
Nominal Size (in.)	Working Load Limit* (t)	Model				Weight Each (lbs.)	
		G-209 Galv.	S-209 S.C.	G-213 Galv.	S-213 S.C.	G-209 S-209	G-213 S-213
3/16	[†] 1/3	1018357	—	—	—	.06	—
1/4	1/2	1018375	1018384	1018017	1018026	.10	.13
5/16	3/4	1018393	1018400	1018035	1018044	.19	.18
3/8	1	1018419	1018428	1018053	1018062	.31	.29
7/16	1 1/2	1018437	1018446	1018071	1018080	.38	.38
1/2	2	1018455	1018464	1018099	1018106	.72	.71
5/8	3 1/4	1018473	1018482	1018115	1018124	1.37	1.50
3/4	4 3/4	1018491	1018507	1018133	1018142	2.35	2.32
7/8	6 1/2	1018516	1018525	1018151	1018160	3.62	3.49
1	8 1/2	1018534	1018543	1018179	1018188	5.03	5.00
1 1/8	9 1/2	1018552	1018561	1018197	1018204	7.41	6.97
1 1/4	12	1018570	1018589	1018213	1018222	9.50	9.75
1 3/8	13 1/2	1018598	1018605	1018231	1018240	13.53	13.25
1 1/2	17	1018614	1018623	1018259	1018268	17.20	17.25
1 3/4	25	1018632	1018641	1018277	1018286	27.78	29.46
2	35	1018650	1018669	1018295	1018302	45.00	45.75
2 1/2	[†] 55	1018678	1018687	—	—	85.75	—

Green shading reflects rental inventory.

Dimensions																
Nominal Size (in.)	Working Load Limit*(t)	Dimensions (in.)												Tolerance +/-		
		A	B	C	D	E	F	G	H	L	M	N	P	C	A	
3/16	[†] 1/3	.38	.25	.88	.19	.60	.56	.98	1.47	.16	1.12	—	.19	.06	.06	
1/4	1/2	.47	.31	1.13	.25	.78	.61	1.28	1.84	.19	1.38	1.34	.25	.06	.06	
5/16	3/4	.53	.38	1.22	.31	.84	.75	1.47	2.09	.22	1.66	1.59	.31	.06	.06	
3/8	1	.66	.44	1.44	.38	1.03	.91	1.78	2.49	.25	2.03	1.86	.38	.13	.06	
7/16	1 1/2	.75	.50	1.69	.44	1.16	1.06	2.03	2.91	.31	2.38	2.13	.44	.13	.06	
1/2	2	.81	.63	1.88	.50	1.31	1.19	2.31	3.28	.38	2.69	2.38	.50	.13	.06	
5/8	3 1/4	1.06	.75	2.38	.63	1.69	1.50	2.94	4.19	.44	3.34	2.91	.69	.13	.06	
3/4	4 3/4	1.25	.88	2.81	.75	2.00	1.81	3.50	4.97	.50	3.97	3.44	.81	.25	.06	
7/8	6 1/2	1.44	1.00	3.31	.88	2.28	2.09	4.03	5.83	.50	4.50	3.81	.97	.25	.06	
1	8 1/2	1.69	1.13	3.75	1.00	2.69	2.38	4.69	6.56	.56	5.07	4.53	1.06	.25	.06	
1 1/8	9 1/2	1.81	1.25	4.25	1.16	2.91	2.69	5.16	7.47	.63	5.59	5.13	1.25	.25	.06	
1 1/4	12	2.03	1.38	4.69	1.29	3.25	3.00	5.75	8.25	.69	6.16	5.50	1.38	.25	.06	
1 3/8	13 1/2	2.25	1.50	5.25	1.42	3.63	3.31	6.38	9.16	.75	6.84	6.13	1.50	.25	.13	
1 1/2	17	2.38	1.63	5.75	1.54	3.88	3.63	6.88	10.00	.81	7.35	6.50	1.62	.25	.13	
1 3/4	25	2.88	2.00	7.00	1.84	5.00	4.19	8.86	12.34	1.00	9.08	7.75	2.25	.25	.13	
2	35	3.25	2.25	7.75	2.08	5.75	4.81	9.97	13.68	1.22	10.34	8.75	2.40	.25	.13	
2 1/2	[†] 55	4.13	2.75	10.50	2.71	7.25	5.69	12.87	17.84	1.38	13.00	—	3.13	.25	.25	

+ Furnished in screw pin only.

* Note: Maximum Proof Load is 2.0 times the working load limit. Minimum ultimate strength is 6 times the Working load limit.

Green shading reflects rental inventory.